



CHASSIS:	PETERBILT 367 SBFA
ENGINE:	CUMMINS X15 505 HP
TRANSMISSION:	ALLISON 4000 EVS
AXLES:	20,000# FRONT / 52,000# REAR
MODEL:	UST TANKER
WATER/FOAM:	4000 / 0 GALLONS
PUMP:	HALE MBP 750 GPM
FOAM SYSTEM:	-
GENERATOR:	-

DOOR FRAMED OPENINGS

COMPARTMENT	DOOR FRAMED OPENING
L1	42.50-W x 34.50-H
L2	42.50-W x 34.50-H
R1	42.50-W x 34.50-H
R2	42.50-W x 34.50-H

SPECIAL NOTES:

CUSTOMER

THIS DRAWING IS A CLOSE APPROXIMATION OF YOUR FIRE APPARATUS. IN ALL CASES WHERE THE DRAWING AND THE WRITTEN SPECIFICATION DIFFER, THE SPECIFICATION SHALL PREVAIL. PLEASE WORK WITH YOUR DEALER TO ASSURE THAT THE WRITTEN SPECIFICATION REPRESENTS WHAT YOU WANT IN YOUR FINISHED PRODUCT. SPARTAN EMERGENCY RESPONSE BUILDS TO THE WRITTEN SPECIFICATION, NOT THE DRAWING TO ASSURE THAT YOUR NEEDS ARE MET.

PROPRIETARY AND CONFIDENTIAL

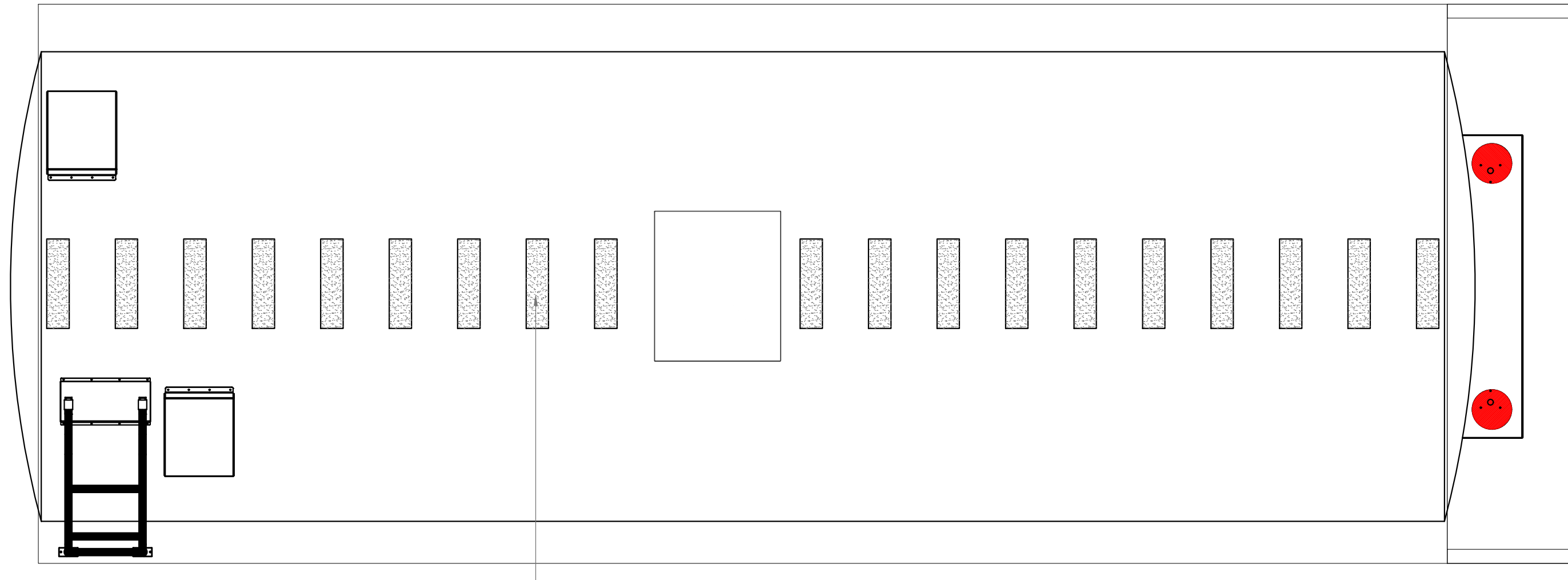
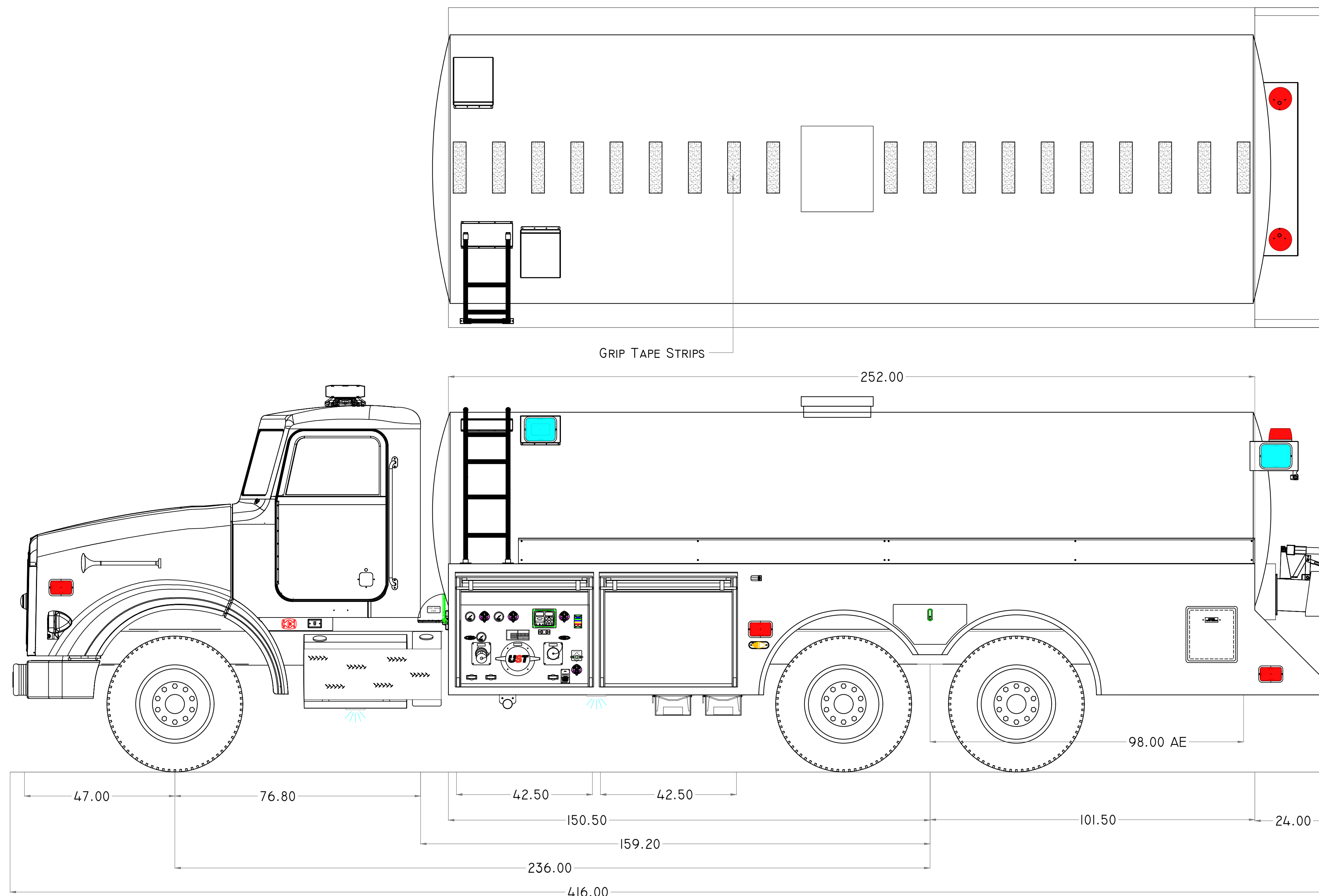
THE INFORMATION CONTAINED IN THIS DRAWING IS THE SOLE PROPERTY OF SPARTAN EMERGENCY RESPONSE. ANY REPRODUCTION IN PART OR AS A WHOLE WITHOUT THE WRITTEN PERMISSION OF SPARTAN EMERGENCY RESPONSE IS PROHIBITED. SPARTAN MOTORS USA, INC. D/B/A SPARTAN EMERGENCY RESPONSE.

REV	DATE	DESCRIPTION	NAME
1	12/19/19	NEW FILES	R.H.
0	11/18/19	INITIAL PROPOSAL	R.H.

SCALE: NOT TO SCALE

CUSTOMER: SHIPSHAWANA
VOLUNTEER FIRE DEPARTMENT

TRUCK NUMBER: 000000
DEALER: HOOSIER FIRE EQUIPMENT



GRIP TAPE STRIPS

